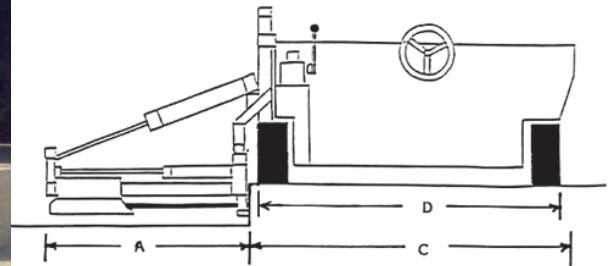


Specifications >>

Model 210-5 SRA



	Horizontal Position >>	Vertical Position >>
Lower Length (A)	47" (119.4 cm)	67 1/2" (171.5 cm)
Overall Length (A) + (C)	117" (297.2 cm)	91" (231.1 cm)
Cart Length (C)	70 " (177.8 cm)	
Wheel Base (D)	58" (147.3 cm)	
Width	60" (152.4 cm)	
Height (E)	44" (111.8 cm)	Varies
Weight	2,400 lbs (1,089.6 kg)	
Drill distance from corner	6" (15.2 cm)	N/A
Drill distance from ground	3" (7.6 cm)	up to 12" (30.5 cm)
Drill depth (std.)	18" (45.7 cm)	
Drill bit diameter	5/8" to 2 1/2" (15.9 mm to 63.5 mm)	
Distance from wheel to center of bit (F)	N/A	23 1/2" (59.7 cm)
Drill motor (pneumatic)	CP 32A	
Weight	54 lbs (24.5 kg)	
Chuck size (std.)	7/8" x 3 1/4" (22.2 mm x 82.6 mm)	
Air consumption (minimum)	500 cfm (14.0 m3/min)	
Operating pressure	90 psi (6.2 bar)	
Impact (ft. lbs./blow)	36 fpb (49.0 J)	
Blows/minute	2200 bpm	
Rotations/minute	288 rpm	

*Specifications subject to change without notice.