

ICE® Model 125C Hydraulic Vibratory Driver/ Extractor with Model 1200E Power Unit



Highest driving force (415 tons, 3700 kN) of any single ICE vibrator.
Design combines high eccentric moment (12,500 in-lbs, 142 kg-m) & suspended weight w/
quad caisson clamps less than 55,000 lbs (25000 kg).
Twin 1190HP (887 kW) CAT C15 Tier 3 (Stage IIIA) engines meet all EPA & EU emission regulations.
Up to 200 ton (1800 kN) line pull for extraction.



Patented Dual-pull™ suppressor provides maximum vibration isolation during driving and light extraction combined with high pull capability for tough extraction jobs.

Integral quad caisson clamps for optimizing force transmission.

Maximum efficiency and reliability are provided by our open-loop hydraulic system and application proven piston pumps and motors.

Remote-control pendant for vibrator and clamp with emergency stop. Engine speed control for fuel efficiency.

Adaptable for underwater operation.

Environmentally friendly Chevron Clarity® non-toxic, biodegradable hydraulic oil.

Designed and manufactured in the USA by ICE®, world leader in cost-effective foundation equipment since 1974.

PACO Equipment | USA (WA/CA) - CANADA (Alberta / BC / Saskatchewan)

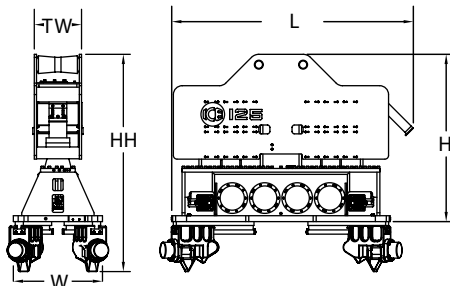
Corporate Office: 250 S. Webster Street Seattle, WA 98108 | 800.658.6379 | pacoequip.com

ICE® Model 125C

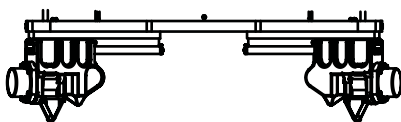
Hydraulic Vibratory Driver/ Extractor with Model 1200E Power Unit



Dimensions



Clamps & Accessories



**Four Model 142BH
Caisson Clamps
on 4' H-Bars**

Clamping force
568 tons, 5062 kN
Weight
9,604 lbs, 4356 kg

Other Model 125C Accessories

Wireless remote

Model 125C Vibrator Specifications

Eccentric moment	12,500 in-lbs	142 kg-m
Maximum frequency	1500 vpm	
Driving force	415 tons	3 700 kN
Centrifugal force	400 tons	3 580 kN
Amplitude (free w/o clamp)	0.76 in	19 mm
Standard line pull for extracting	200 tons	1 800 kN
Maximum line pull for extracting	200 tons	1 800 kN
Weight (no clamp or hoses)	43,750 lbs	19 900 kg
Non-vibrating weight	11,000 lbs	5 000 kg
Height without clamp (H)	114 in	2 880 mm
Length (L)	164 in	4 160 mm
Width (W)	61 in	1 535 mm
Throat width (TW)	32 in	813 mm
Hydraulic hose length	150 ft	46 m
Hydraulic hose weight	2,400 lbs	1 090 kg
Height with sheeting clamp* (HH)	- in	- mm
Weight with sheeting clamp & 1/2 hoses*	- lbs	- kg
Height with beam & caisson clamps*	148 in	3 740 mm
Weight with beam & caisson clamps*	54,615 lbs	24 775 kg

* See "Clamps and Accessories Manual" for in depth description

Model 1200E Power Unit Specifications

Engine	Twin CAT C15	
Power	1,190 HP	887 kW
Operating speed	1,900 rpm	1 900 rpm
Max. motors pressure	5,500 psi	380 bar
Motors flow (no load)	275 gpm	1 045 lpm
Clamp pressure	4,500 psi	310 bar
Clamp flow	6 gpm	22 lpm
Weight (w/ full fluid & 1/2 fuel)	32,500 lbs	14 740 kg
Length	224 in	5 700 mm
Width	84 in	2 135 mm
Height	114 in	2 900 mm
Hydraulic reservoir	550 gal	2 080 liters
Fuel capacity	430 gal	1 625 liters

PACO Equipment | USA (WA/CA) - CANADA (Alberta / BC / Saskatchewan)

Corporate Office: 250 S. Webster Street Seattle, WA 98108 | 800.658.6379 | pacoequip.com