

ICE® Model 110C Hydraulic Vibratory Driver/ Extractor with Model 1200E Power Unit



Highest driving force (409 tons, 3640 kN) in its class.
Patented design combines high eccentric moment (11,000 in-lbs, 126 kg-m) and suspended weight with caisson clamp under 30,000 lbs (13600 kg).
Twin 595HP (444 kW) CAT C15 Tier 3 (Stage IIIA) engines meet all EPA & EU emission regulations.
Up to 140 ton (1250 kN) line pull for extraction.

Patented Dual-pull™ suppressor provides maximum vibration isolation during driving and light extraction combined with high pull capability for tough extraction jobs.

Optional bias weights up to 5500 lbs (2495 kg) to increase pile penetration rates in difficult soils.

Full range of clamps available for sheet piling, H-Beams, pipe & caissons including quad caisson clamps.

Maximum efficiency and reliability are provided by our open-loop hydraulic system and application proven piston pumps and motors.

Remote-control pendant for vibrator and clamp with emergency stop. Engine speed control for fuel efficiency.

Adaptable for underwater operation.

Environmentally friendly Chevron Clarity® non-toxic, biodegradable hydraulic oil.

Designed and manufactured in the USA by ICE®, world leader in cost-effective foundation equipment since 1974.



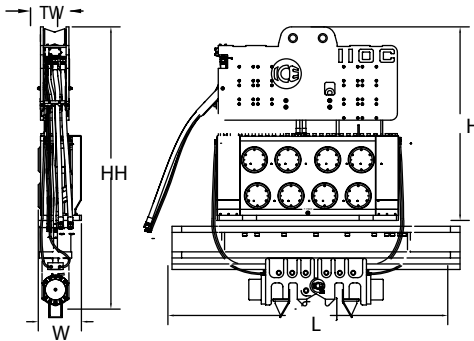
PACO Equipment | USA (WA/CA) - CANADA (Alberta / BC / Saskatchewan)

Corporate Office: 250 S. Webster Street Seattle, WA 98108 | 800.658.6379 | pacoequip.com

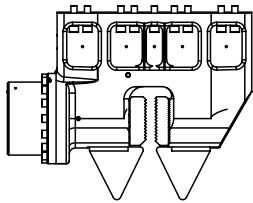
ICE® Model 110C Hydraulic Vibratory Driver/ Extractor with Model 1200E Power Unit



Dimensions

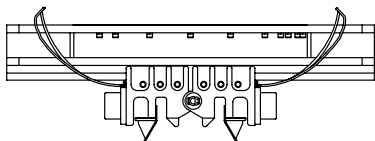


Clamps & Accessories



Model 300 Sheeting Clamp

Clamping force
300 tons, 2670 kN
Weight
5,400 lbs, 2455 kg



10' Caisson Beam with Model 142BH Caisson Clamps

Clamping force
284 tons, 2520 kN
Weight
10,242 lbs, 4546 kg

Other Model 110C Accessories

7' Quad Plate Bias Weights
12' Quad beam Wireless remote

Model 110C Vibrator Specifications

Eccentric moment	11,000 in-lbs	126 kg-m
Maximum frequency	1600 vpm	
Driving force	409 tons	3 640 kN
Centrifugal force	400 tons	3 560 kN
Amplitude (free w/o clamp)	1.6 in	40 mm
Standard line pull for extracting	110 tons	1 020 kN
Maximum line pull for extracting	140 tons	1 250 kN
Weight (no clamp or hoses)	18,500 lbs	8 390 kg
Non-vibrating weight	4,800 lbs	2 175 kg
Height without clamp (H)	104 in	2 630 mm
Length (L)	98 in	2 470 mm
Width (W)	23 in	585 mm
Throat width (TW)	15.25 in	387 mm
Hydraulic hose length	150 ft	46 m
Hydraulic hose weight	2,400 lbs	1 090 kg
Height with sheeting clamp* (HH)	150 in	3 800 mm
Weight with sheeting clamp & 1/2 hoses*	25,100 lbs	11 385 kg
Height with beam & caisson clamps*	151 in	3 825 mm
Weight with beam & caisson clamps*	29,960 lbs	13 590 kg

* See "Clamps and Accessories Manual" for in depth description

Model 1200E Power Unit Specifications

Engine	Twin CAT C15	
Power	1190 HP	887 kW
Operating speed	1,800 rpm	1 800 rpm
Maximum motors pressure	5,500 psi	380 bar
Motors flow (no load)	265 gpm	1000 lpm
Clamp pressure	4,500 psi	310 bar
Clamp flow	6 gpm	22 lpm
Weight (w/ full fluid & 1/2 fuel)	32,500 lbs	14 740 kg
Length	224 in	5 700 mm
Width	84 in	2 135 mm
Height	114 in	2 900 mm
Hydraulic reservoir	550 gal	2 080 liters
Fuel capacity	430 gal	1 625 liters

PACO Equipment | USA (WA/CA) - CANADA (Alberta / BC / Saskatchewan)

Corporate Office: 250 S. Webster Street Seattle, WA 98108 | 800.658.6379 | pacoequip.com