



American Pneumatic Tool

9949 Tabor Place, Santa Fe Springs, California, CA 90670, U.S.A.

TRENCH & CLAY DIGGERS



For assistance in any sales, technical, maintenance or repair questions, please call APT @

Phone: (800) 532-7402 or (562) 204-1555 • Fax: (800) 715-6502 or (562) 204-1773

Website: www.apr-tools.com • e-mail: info@apr-tools.com

TDS-1047 Rev A

© 2011 AMERICAN PNEUMATIC TOOLS, INC.



American Pneumatic Tool

9949 Tabor Place, Santa Fe Springs, California, CA 90670, U.S.A.

CLAY AND TRENCH DIGGERS TOOL MAINTENANCE & REPAIR INFORMATION

FIELD OPERATION:

Before use:

1. Fill the reservoir with air tool oil or 10W equivalent.
2. Tighten nuts on the back head bolts.
3. Check for play in the front head with a tool steel. Replace hex bushing if worn.
4. Check all nuts to ensure they are tight on the tool.
5. Replace retainer if worn.
6. Clean any water and/or dirt from air hose before connecting it to the tool.

During use:

1. For your safety and that of others, keep tool against work at all times.
2. When moving from one work area to another, shut off air supply to tool.
3. Never run a tool when steel bit is not against the work.
4. Do not use tool as a wedge or prying instrument.
5. Refill oil reservoir approximately every 2 hours.
6. Check all nuts to ensure they are tight on the tool.

After use:

1. Flush tool with cleaning solvent, then refill with air tool oil or 10W equivalent.
2. Do not leave tool in water or dirt.
3. Check all nuts to ensure they are tight on the tool.
4. Store the tool well oiled.

TROUBLESHOOTING GUIDE:

If the tool runs erratically:

1. Check all the nuts to ensure they are tight on the tool.
2. Flush cleaning solvent through the tool and then refill immediately with air tool oil or 10W equivalent.
3. If tool still runs erratically, disassemble and check the cleanliness of the valves, In addition, check for plugged cylinder ports.

If the tool has an air leak around the back head:

1. Disassemble and inspect the back head to see if the throttle valve or O ring seals are damaged.
2. Tighten up all back head nuts securely.

If the tool is not hitting hard enough:

1. Check all the nuts to ensure they are tight on the tool.
2. If all nuts are tight, then check for wear on internal parts, if worn, parts should be replaced.
3. Check clearances between piston and cylinder bore carefully.

If you cannot shut off the tool:

1. Immediately turn off the air source, then disconnect the air supply.
2. Disassemble, back head and inspect the throttle valve and O rings for damage.

For assistance in any sales, technical, maintenance or repair questions, please call APT @

Phone: (800) 532-7402 or (562) 204-1555 • Fax: (800) 715-6502 or (562) 204-1773

Website: www.apr-tools.com • e-mail: info@apr-tools.com

TDS-1048 Rev A



American Pneumatic Tool

9949 Tabor Place, Santa Fe Springs, California, CA 90670, U.S.A.

MODEL 118 CLAY DIGGER

PART # 5201 (7/8" HEX x 3-1/4")
PART # 5202 (1" HEX x 4-1/4")



The APT Model 118 Clay Digger is used for digging clay, shale, hard pan and frozen ground. The Model 118 is an ideal tool for clearing out dirt under existing foundations and for tunneling under existing structures. This medium weight tool can be used for horizontal work and for vertical work. The only difference between the M117, M118 and M119 tools are the handles. These tools have the same cylinders and the majority of the internal parts in common, which makes them very versatile tools for use in various types of work. The M118 features APT's patented Ball Valve design. (Pat. # 8,276,682 B2)

SPECIFICATIONS

Part #	5201	5202
Chuck Size	7/8" Hex x 3-1/4"	1" Hex x 4-1/4"
Bore Diameter (inches)	1-3/4"	
Stroke (inches)	3-3/8"	
Blows per Minute	1850	
CFM @ 90 psi	34 - 36	
Weight (lbs)	31	
Length (inches)	22 1/2"	
Air Inlet Size	3/8" MALE NPT	

FEATURES

- New! Automatic Ball Valve
- Built-in automatic oiler
- Drop forged, steel, D-style handle
- Replaceable chuck bushing
- Latch type retainer
- Deep, case hardened forged alloy steel cylinder

For assistance in any sales, technical, maintenance or repair questions, please call APT @
Phone: (800) 532-7402 or (562) 204-1555 • Fax: (800) 715-6502 or (562) 204-1773

Website: www.apr-tools.com • e-mail: info@apr-tools.com

TDS-1049 Rev B



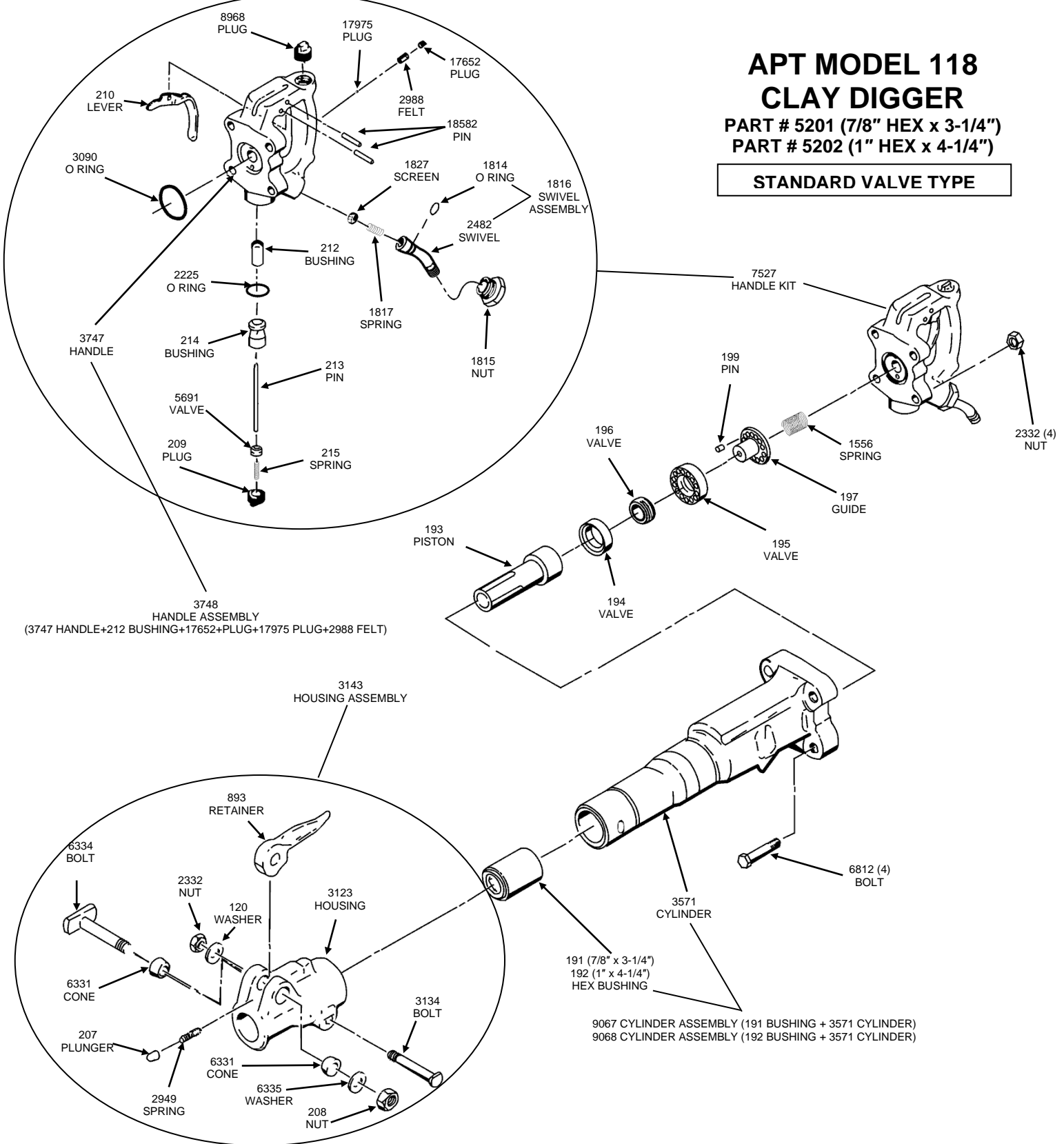
American Pneumatic Tool

9949 Tabor Place, Santa Fe Springs, California, CA 90670, U.S.A.

APT MODEL 118 CLAY DIGGER

PART # 5201 (7/8" HEX x 3-1/4")
PART # 5202 (1" HEX x 4-1/4")

STANDARD VALVE TYPE



For assistance in any sales, technical, maintenance or repair questions, please call APT @
Phone: (800) 532-7402 or (562) 204-1555 • Fax: (800) 715-6502 or (562) 204-1773

Website: www.apr-tools.com • e-mail: info@apr-tools.com

TDS-1050 Rev A



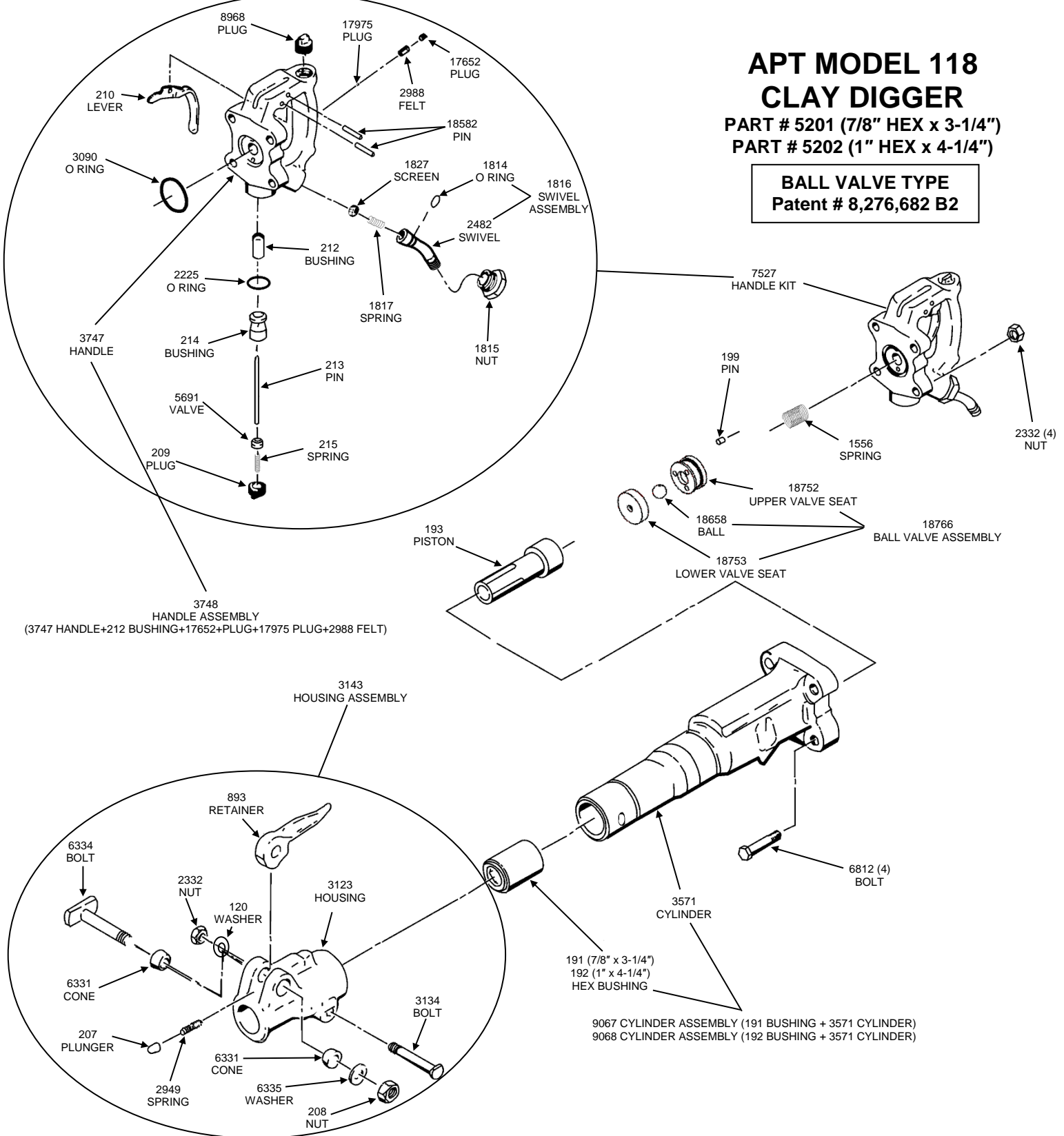
American Pneumatic Tool

9949 Tabor Place, Santa Fe Springs, California, CA 90670, U.S.A.

APT MODEL 118 CLAY DIGGER

PART # 5201 (7/8" HEX x 3-1/4")
PART # 5202 (1" HEX x 4-1/4")

BALL VALVE TYPE
Patent # 8,276,682 B2



For assistance in any sales, technical, maintenance or repair questions, please call APT @
Phone: (800) 532-7402 or (562) 204-1555 • Fax: (800) 715-6502 or (562) 204-1773

Website: www.apr-tools.com • e-mail: info@apr-tools.com

TDS-1107 Rev B



American Pneumatic Tool

9949 Tabor Place, Santa Fe Springs, California, CA 90670, U.S.A.

MODEL 119 TRENCH DIGGER

PART # 5203 (7/8" HEX x 3-1/4")

PART # 5204 (1" HEX x 4-1/4")



The APT Model 119 Trench Digger is used for digging clay, shale, hard pan and frozen ground. The Model 119 is the perfect tool for digging trenches to lay pipes, phone lines and for foundation work. The only difference between the M117, M118 and M119 tools are the handles. These tools have the same cylinders and the majority of the internal parts in common, which makes them very versatile tools for use in various types of work.

SPECIFICATIONS

Part #	5203	5204
Chuck Size	7/8" Hex x 3-1/4"	1" Hex x 4-1/4"
Bore Diameter (inches)	1-3/4"	
Stroke (inches)	3-3/8"	
Blows per Minute	1850	
CFM @ 90 psi	34 - 38	
Weight (lbs)	37	
Length (inches)	31"	
Air Inlet Size	1/2" FEMALE NPT	

FEATURES

- New! Patented Automatic Ball Valve (Pat. # 8,276,682 B2)
- Built-in automatic oiler
- Drop forged, steel, T-style handle
- Replaceable chuck bushing
- Latch type retainer
- Deep, case hardened forged alloy steel cylinder
- Rubber handle grips
- Teflon faced throttle valve

For assistance in any sales, technical, maintenance or repair questions, please call APT @

Phone: (800) 532-7402 or (562) 204-1555 • Fax: (800) 715-6502 or (562) 204-1773

Website: www.apr-tools.com • e-mail: info@apr-tools.com

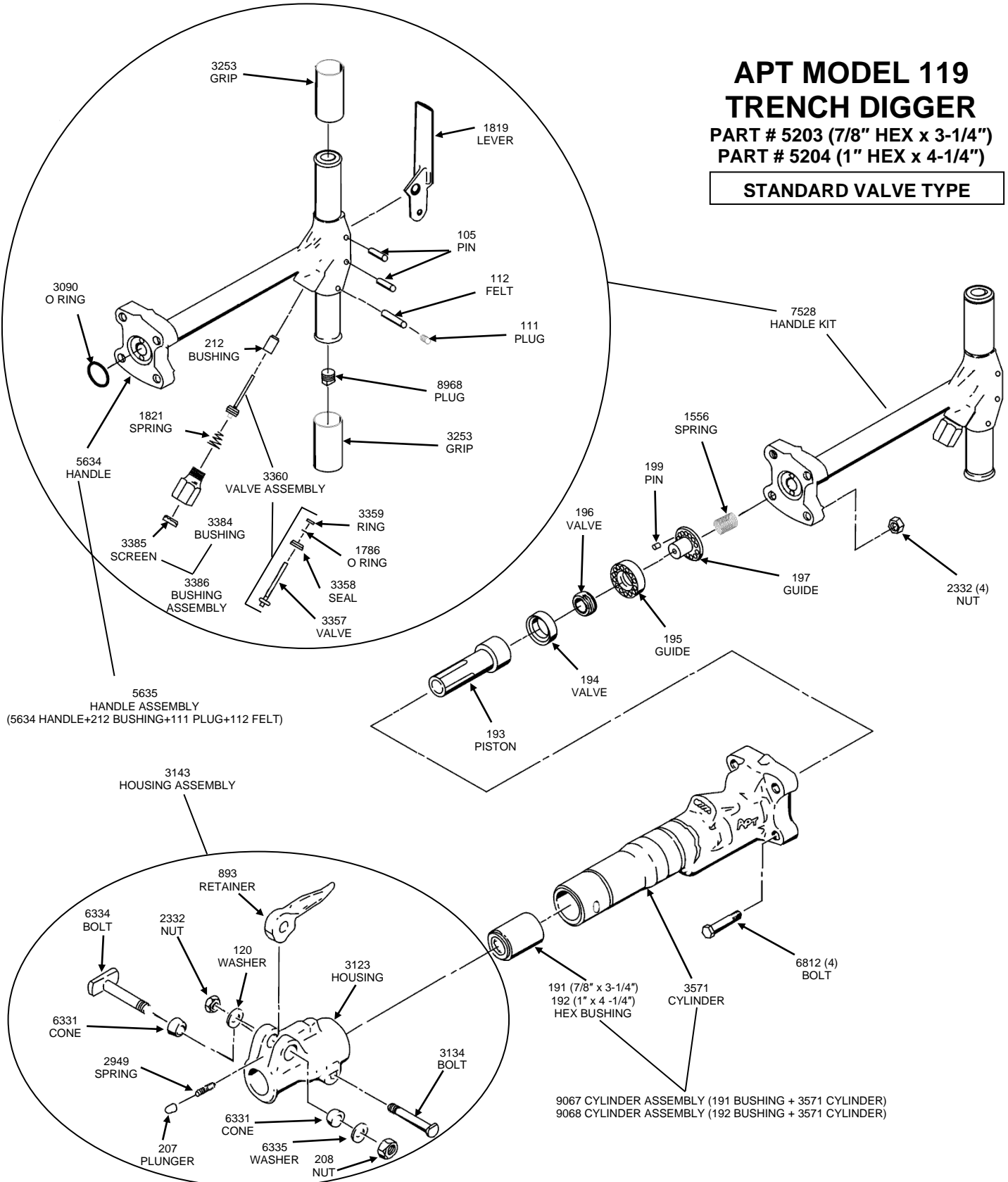
TDS-1051 Rev B



American Pneumatic Tool

9949 Tabor Place, Santa Fe Springs, California, CA 90670, U.S.A.

**APT MODEL 119
TRENCH DIGGER**
PART # 5203 (7/8" HEX x 3-1/4")
PART # 5204 (1" HEX x 4-1/4")
STANDARD VALVE TYPE



For assistance in any sales, technical, maintenance or repair questions, please call APT @
 Phone: (800) 532-7402 or (562) 204-1555 • Fax: (800) 715-6502 or (562) 204-1773

Website: www.apr-tools.com • e-mail: info@apr-tools.com

TDS-1052 Rev A



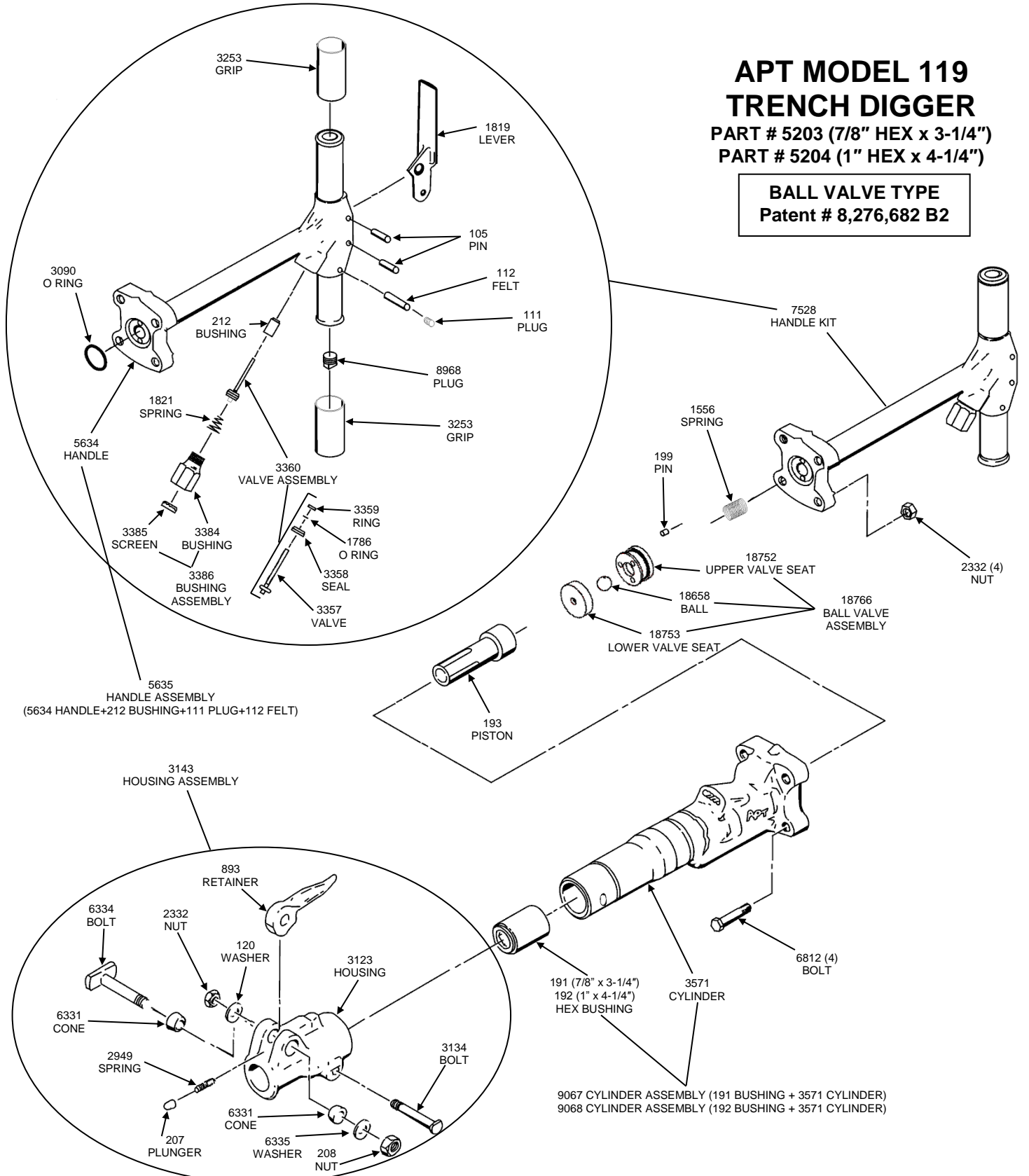
American Pneumatic Tool

9949 Tabor Place, Santa Fe Springs, California, CA 90670, U.S.A.

APT MODEL 119 TRENCH DIGGER

PART # 5203 (7/8" HEX x 3-1/4")
PART # 5204 (1" HEX x 4-1/4")

BALL VALVE TYPE
Patent # 8,276,682 B2



For assistance in any sales, technical, maintenance or repair questions, please call APT @
Phone: (800) 532-7402 or (562) 204-1555 • Fax: (800) 715-6502 or (562) 204-1773

Website: www.apr-tools.com • e-mail: info@apr-tools.com

TDS-1108 Rev B



American Pneumatic Tool

9949 Tabor Place, Santa Fe Springs, California, CA 90670, U.S.A.

MODEL 125 CLAY DIGGER

PART # 5211 (7/8" HEX x 3-1/4")



The APT Model 125 Clay Digger can be used for digging clay, shale, hard pan and frozen ground. The Model 125 is a lighter weight tool ideal for digging medium to lightly packed soil, for light demolition work as well as for tunneling around existing foundations. With its latch type retainer, lighter weight and short length, this tool is one of the best and easiest to handle Clay Diggers made today.

SPECIFICATIONS

Part #	5211
Chuck Size	7/8" Hex x 3-1/4"
Bore Diameter (inches)	1-11/16"
Stroke (inches)	2-3/4"
Blows per Minute	2120
CFM @ 90 psi	38 - 42
Weight (lbs)	21
Length (inches)	18-3/8"
Air Inlet Size	1/2" FEMALE NPT

FEATURES

- Flapper valve design allows dirt to pass through without stopping tool
- Drop forged, D-style steel handle
- Replaceable chuck and piston stem bushing
- Latch type retainer
- Deep, case hardened forged alloy steel cylinder
- Inside trigger for better control and safety

For assistance in any sales, technical, maintenance or repair questions, please call APT @
Phone: (800) 532-7402 or (562) 204-1555 • Fax: (800) 715-6502 or (562) 204-1773

Website: www.apr-tools.com • e-mail: info@apr-tools.com

TDS-1053 Rev A

© 2011 AMERICAN PNEUMATIC TOOLS, INC.

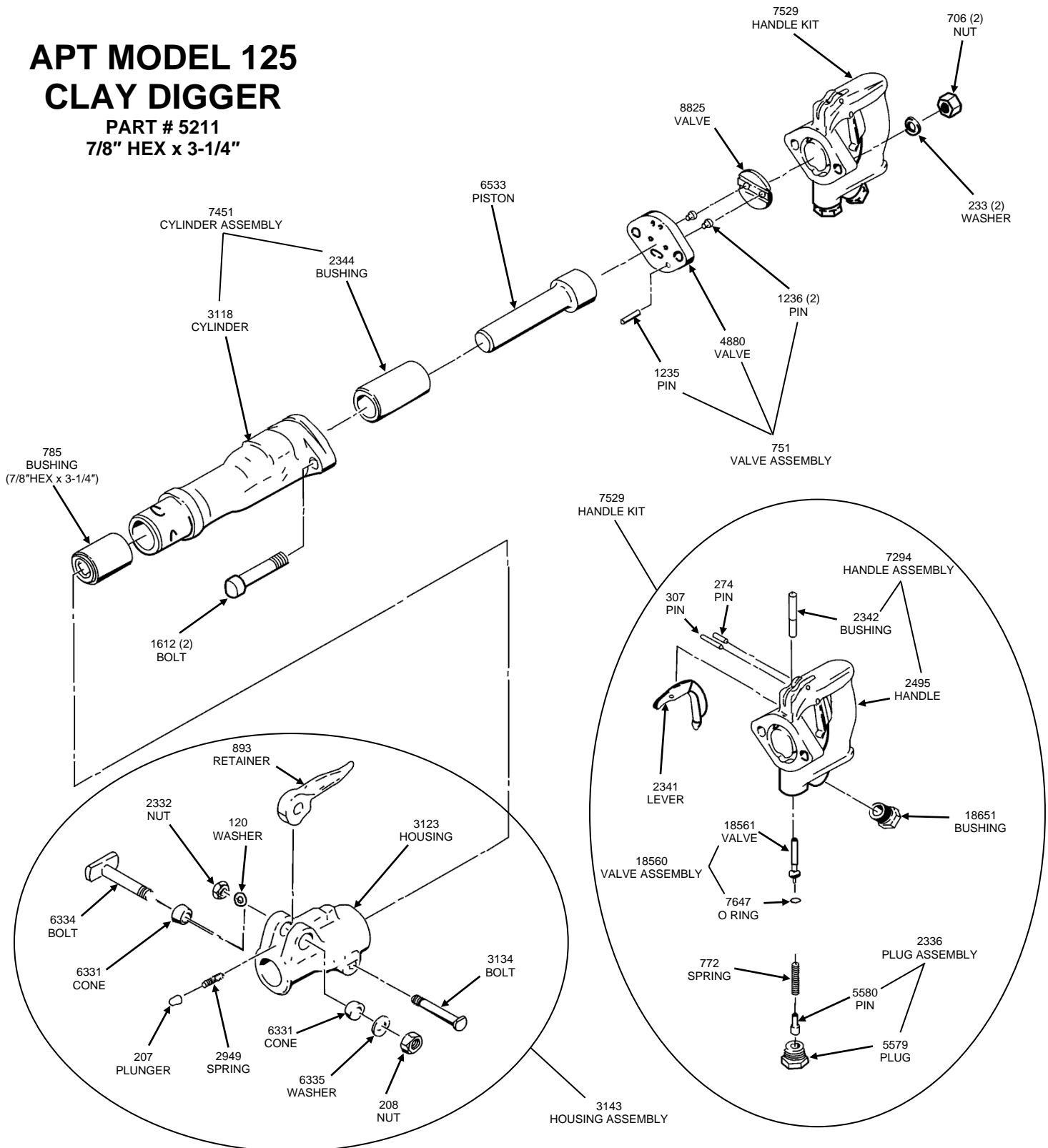


American Pneumatic Tool

9949 Tabor Place, Santa Fe Springs, California, CA 90670, U.S.A.

APT MODEL 125 CLAY DIGGER

PART # 5211
7/8" HEX x 3-1/4"



For assistance in any sales, technical, maintenance or repair questions, please call APT @
Phone: (800) 532-7402 or (562) 204-1555 • Fax: (800) 715-6502 or (562) 204-1773

Website: www.apr-tools.com • e-mail: info@apr-tools.com

TDS-1054 Rev A

© 2011 AMERICAN PNEUMATIC TOOLS, INC.



American Pneumatic Tool

9949 Tabor Place, Santa Fe Springs, California, CA 90670, U.S.A.

CLAY & TRENCH DIGGERS ACCESSORIES, SERVICE AND REPAIR KITS



M118

6465 MUFFLER KIT
18295 LATCH KIT
16897 WHIP HOSE ASSEMBLY WITH OILER
16895 WHIP HOSE ASSEMBLY WITHOUT OILER
18788 O RING AND SEAL KIT
17193 UNIVERSAL COUPLER

M119

6465 MUFFLER KIT
18295 LATCH KIT
16893 WHIP HOSE ASSEMBLY WITH OILER
16889 WHIP HOSE ASSEMBLY WITHOUT OILER
18788 O RING AND SEAL KIT
18504 UNIVERSAL COUPLER

M125

18295 LATCH KIT
16891 WHIP HOSE ASSEMBLY WITH OILER
9266 WHIP HOSE ASSEMBLY WITHOUT OILER
18790 O RING AND SEAL KIT
18504 UNIVERSAL COUPLER

ALL MODELS

18754 SAFETY CABLE, HOSE TO HOSE
18755 SAFETY CABLE, HOSE TO TOOL

For assistance in any sales, technical, maintenance or repair questions, please call APT @
Phone: (800) 532-7402 or (562) 204-1555 • Fax: (800) 715-6502 or (562) 204-1773

Website: www.apr-tools.com • e-mail: info@apr-tools.com

TDS-1055 Rev A

© 2011 AMERICAN PNEUMATIC TOOLS, INC