

Mini-Series Compact Grouters

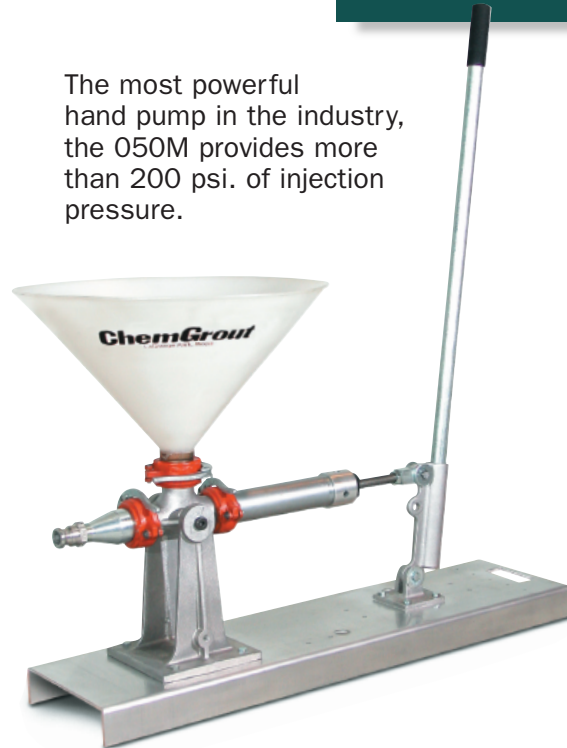
Compact, simple and productive, the Mini-Series is ideal for a wide variety of construction and restoration projects.

CG-050 Air Powered



Lightweight aluminum construction offers portability for confined, hard to reach jobs.

CG-050M Manual Hand Pump



The most powerful hand pump in the industry, the 050M provides more than 200 psi. of injection pressure.

CG-550P Air Powered

A 34-gallon (128 liter) mix tank, with pump and holding hopper, provides a non-stop, continuous operation.



Skid mounted and portable, the Mini-Series is ideal for most pre-packaged, non-shrink grouts and sand/cement ratios of up to 2:1.

Mini-Series features the durable 2" positive displacement piston pump that produces up to 5 gpm, 200 to 400 psi.

All pumping components are easily accessible and can be disassembled without tools, for fast and efficient cleaning.

A 12¹/₂ foot grout hose (complete with fittings), and a spare set of piston cups are included with every unit.

CG-050M Manual Hand Pump

The heavy-duty Model CG-050M is an easy to use, skid mounted hand pump designed for smaller jobs using high viscosity slurries and most pre-packaged grouts. Its rugged, lightweight aluminum construction offers mobility in areas where no air or electric power sources are available. The 050M features a large 5-gallon holding hopper and durable 2" piston pump that produces discharge head exceeding 150 feet (ideal for vertical lifting). The manually powered, positive displacement piston pump disassembles in minutes without tools for simple cleaning and maintenance.

CG-050M	Manual Hand Pump
Pump	2" piston
Output	2-3 gpm (7-11 lpm)
Pressure	200 psi (14 bar)
Weight	52 lbs (24 kg)
Size	44"L x 11"W x 31"H

CG-050 Mini Grout Pump

Compact and portable, the ChemGrout Model CG-050 remains the industry's choice for efficient grouting of smaller applications. Designed for pumping grout mixes, high viscosity slurries and premixed grouts, it delivers up to 5 gpm with pressures to 225 psi (400 psi hydraulic). Like the above CG-050M, it utilizes a 5-gallon holding hopper and 2" piston pump.

Engineered for minimal maintenance, the 050 has only three wetted and five working parts. Quick disconnect couplings allow for rapid disassembly in just seconds for easy maintenance and clean-up. The safe, compressed air drive is especially suited for mines, tunnels and remote sites where fuel fumes are dangerous and electricity is unavailable. One-man operation saves both time and money.

CG-050	Air	Hydraulic
Pump	2" piston	2" piston
Output	5 gpm (19 lpm)	5 gpm (19 lpm)
Pressure	225 psi (16 bar)	400 psi (28 bar)
Weight	55 lbs. (25 kg)	95 lbs. (48 kg)
Requires	15 cfm, 100 psi	5 gpm, 1000 psi
Size	44"L x 11"W x 24"H	

Applications include:

Door & window frames, void filling, slab raising, pavement dowel bars, piling encasements, machine base & joint grouting, waterproofing, tank stabilization, pipe diaphragms, tilt-up panels, t-joints, traffic dividers, piling encasements, precast tunnel joints, post tensioning, concrete floors/roofs.

CG-550P Compact Grout Pump & Mixer

The versatile ChemGrout CG-550P is a complete grouting system that provides continuous operation by combining a high efficiency paddle mixer and the field proven CG-050 2" positive displacement piston pump. Air or hydraulically powered, the skid mounted 550P features a 34-gallon mixing tank equipped with baffles, bag breakers and a variable speed high-efficiency paddle that insures rapid and thorough mixing.

Once mixed, material is transferred into a 5-gallon holding hopper through a slide gate specially designed to handle the most difficult materials. Labor savings are realized using a single operator to control both the mixer and pump, increasing productivity. The rugged steel framed system stands up to the toughest job site conditions. The 550P is complete, ready for fast mobilization, and easily transported in a pick-up truck.

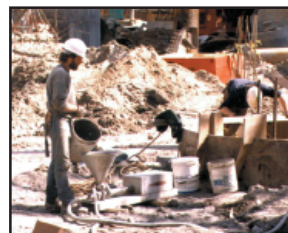
CG-550P	Air	Hydraulic
Pump	2" piston	2" piston
Paddle Mixer	34 gal (128 liter)	34 gal (128 liter)
Output	5 gpm (19 lpm)	5 gpm (19 lpm)
Pressure	225 psi (16 bar)	400 psi (28 bar)
Weight	300 lbs (136 kg)	410 lbs (186 kg)
Power Required	85 cfm, 100 psi	2 supplies ea/ 5 gpm, 1500 psi
Size	44"L x 27"W x 47"H	



Slab Jacking



Highway Dowel Rods



Piling Encasements



Filling Door Frame

ChemGrout®

Widest Selection of Grouting Equipment in the World

PACO Equipment | USA (WA/CA) - CANADA (Alberta / BC / Saskatchewan)

Corporate Office: 250 S. Webster Street Seattle, WA 98108 | 800.658.6379 | pacoequip.com