



CG-570 Thick-Mix Series

Simple, powerful and built to last, the Thick-Mix Series is ideal for mixing, pumping and spraying a wide range of materials, such as repair mortars, stucco, plasters, fireproofing and finish coats.

**CG-570/3C6/H
Hydraulic Powered**

**CG-PU15/EH/AC
Electric/Hydraulic
Power Pack**



Powerful size 6 progressive cavity pump provides a smooth, easy to control delivery of both thick and thin materials.

A 45-gallon (170 liter) mixing tank, large holding hopper and centrally located controls, ensure non-stop production with a single operator.

High-strength aluminum alloy pump features easy access for both cleaning and maintenance.

Power options include air, hydraulic, gas/hydraulic, electric/hydraulic, and diesel/hydraulic.

**CG-575/3C6/GH
Gas/Hydraulic Powered**



PACO Equipment | USA (WA/CA) - CANADA (Alberta / BC / Saskatchewan)

Corporate Office: 250 S. Webster Street Seattle, WA 98108 | 800.658.6379 | pacoequip.com

CG-570 Thick-Mix Series - Versatile, Durable and Reliable

With its rugged steel construction, the versatile CG-570 Thick-Mix Series mixes and pumps a wide range of materials from thick mortars to thin finishing coats. Optional built-in air compressors (12 cfm for thin and 15 cfm for thick materials) allow even more flexibility for a host of spray applications. Easy to operate and inexpensive to maintain, these time tested grout plants provide quick set-up, smooth pumping, simple clean-up and long term durability.

The dependable Thick-Mix Series is complete and ready for jobsite operation. The heavy-duty 45-gallon mix tank is equipped with bag breaker, baffles and a variable speed high-efficiency paddle mixer that provides high shearing action for thorough and complete particle wetting. The tank outlet valve is a large slide gate that allows the thickest materials to fall easily into the pump's sloped holding hopper. The CG-570's 15-gallon hopper is covered with a removable metal screen, preventing debris or dry material clumps from falling into the pump. Additional mixing is provided

through the use of an auger inside the suction housing, which then feeds the unit's durable 3C6 pump. This efficient method of using a holding hopper allows one batch to be pumped while another is mixed, ensuring a non-stop output of material.

The Thick-Mix Series utilizes a size 6 open throat progressive cavity pump, featuring a non-pulsating positive displacement rotor-stator that provides a constant discharge of materials. This steady material flow is essential for many spray and injection applications. Outputs range up to a maximum of 8 gpm (30 lpm), with pressures of 261 psi (18 bar). The pump's new high-strength aluminum alloy construction offers durability and a weight reduction of 33% over that of similar pumps. A hinged cleanout port has also been added to the suction housing for quick access and easy clean up. Both mixer and pump controls are centrally located and are variable speed. Widely regarded as the industry standard, the Thick-Mix Series is easy-to-use, complete, and ready for the toughest jobsite conditions.



Large slide gate allows an easy transfer of thick materials.



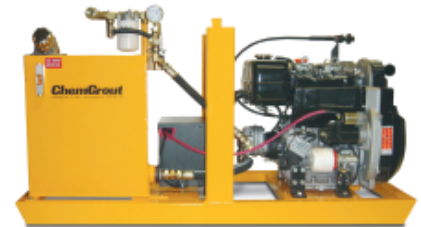
Hinged cleanout port provides quick access and easy clean up.

Specifications

CG-570/3C6 Skid - Power	Required	Weight	Size
Air	250 CFM, 100 PSI	750 Lbs	74" x 31" x 53"
Hydraulic	15 GPM, 2000 PSI	750 Lbs	74" X 31" x 58"
Hydraulic Power Packs	Power	Weight	Size
Elec./Hyd. w/air compressor	* 3 Phase	865 Lbs	57" x 29" x 44"
Gas/Hyd. w/air compressor	Self-Contained	755 Lbs	48" x 40" x 36"
Diesel/Hyd. w/air compressor	Self-Contained	795 Lbs	54" x 40" x 39"
CG-575/3C6 Trailer - Power	Required	Weight	Size
Gas./Hydraulic	Self-Contained	1450 Lbs	110" x 62" x 70"
Gas/Hyd. w/air compressor	Self-Contained	1500 Lbs	110" x 62" x 70"
Diesel/Hyd. w/air compressor	Self-Contained	1625 Lbs	110" x 62" x 70"

*Several Voltages Available

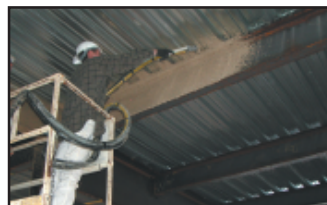
ChemGrout's CG-PU20/DH Diesel/Hydraulic Power Pack



Separate power packs provide a clean, quiet and vibration free working environment.



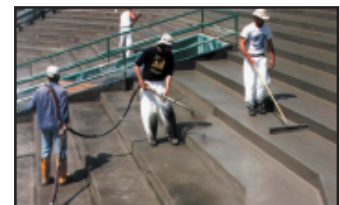
Waterproofing



Fireproofing



Manhole Sealing



Concrete Restoration

Applications include:

Cement block filling, waterproofing, slabjacking, void filling, tie backs, anchoring rock bolts, undersealing, slab raising, underlayments, bonded overlay, bridge rehabilitation, dowel bars, and manhole sealing.

ChemGrout®

Widest Selection of Grouting Equipment in the World

PACO Equipment | USA (WA/CA) - CANADA (Alberta / BC / Saskatchewan)

Corporate Office: 250 S. Webster Street Seattle, WA 98108 | 800.658.6379 | pacoequip.com